

# Discover the charm of Iizuka

Kite Mite Hakken  
Iizuka



---

A reservoir of **history** and **culture** filled with **nature** and **pleasure**

---

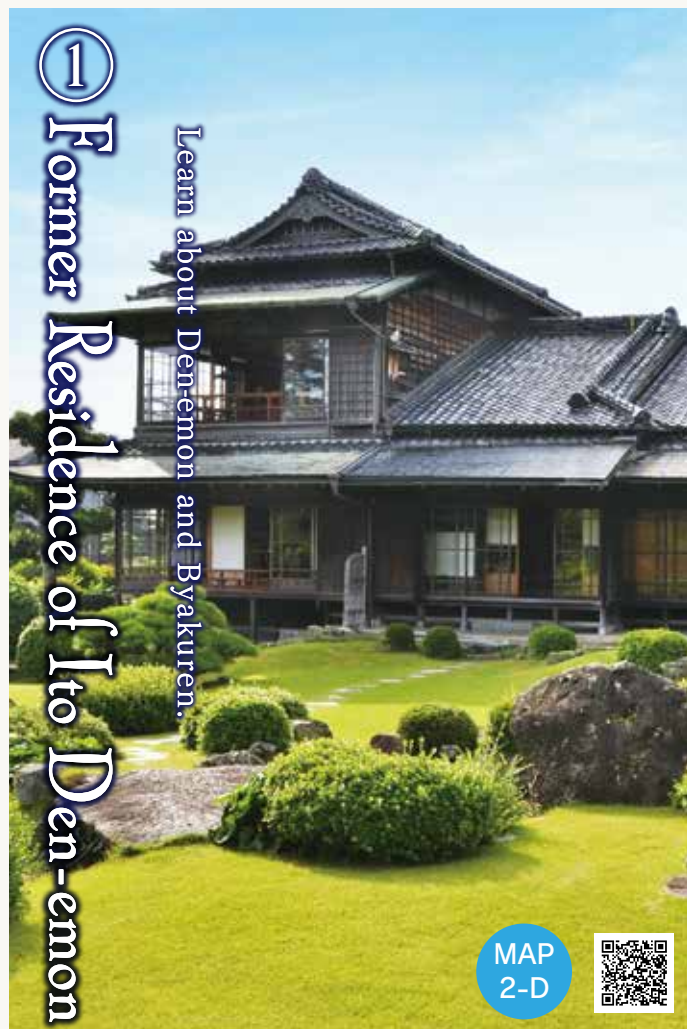


## Former Residence of Ito Den-emon

---

Ito Den-emon Residence plays an important role in sightseeing in Iizuka  
Picture drawn by Morofuji Hiroyuki, known as a reed pen artist





# ① Former Residence of Ito Den-emon

Learn about Den-emon and Byakuren.

MAP  
2-D



This mansion was built in 1897 and has been refurbished several times. It consists of four living accommodations and three storehouses with thick mortar walls, as well as a Japanese-style landscape garden and surrounding circular path. This house is an eclectic mix of Japanese and Western architecture. You can enjoy different views during the different seasons here. Den-emon and his wife Byakuren, a famous poet, married Den-emon and lived here for about a decade.

● National Important Cultural Property Designated Dec. 23, 2020  
● National Important Garden Designated Sep. 21, 2011

☎ 0948-22-9700 🏠 300 Koubukuro, Iizuka  
¥ High school students and older 310 yen (250 yen)  
Elementary and middle school students 100 yen (80 yen)  
Prices indicated in the ( ) are group admission prices  
\*Free admission for high school students and under on Saturdays  
🕒 Thursday-Tuesday : 9:30-17:00 (Last entry at 16:30)  
🗓 Wednesday : (Open if Wednesday is a national holiday)  
New Year's holidays (Dec. 29th- Jan. 3rd)  
No holidays during an event 🅐 Available

## Highlights



Nagaya Gate



Byakuren's room



View of Ito Den-emon's mansion from the garden



Ceiling decorated with arrow feather pattern and tatami hallway



Souvenir shop : Byakuren



Hina Dolls festival in Iizuka



This museum displays Kamekan and Zenkan mirrors excavated from the Tateiwa Ruins, which is designated as an important national cultural asset, and the images of soldiers and horses endowed by Xian City in China. The tools from the post town era, materials regarding Denemon and Byakuren, the original works of Sakubei Yamamoto and coal mining documents are exhibited.

☎ 0948-25-2930 🏠 959-1 Kayanomori, Iizuka  
¥ Adults: 230 yen High school students: 110 yen (70 yen)  
Elementary and middle school students : 50 yen (30 yen)  
\*Prices indicated in the ( ) are group admission prices  
Free admission for high school students and under on Saturdays.  
🕒 9:30 - 17:00 (Last entry at 16:30)  
🗓 Wednesdays, Dec. 29 - Jan. 3  
(If the Wednesday is a holiday, the museum is open) 🅐 Available

## Highlights



Tools used by inn owners



Bracelets made from shells



A clay figure found in a burial mound at the Obasa-Nishi Site



Armor worn by samurai

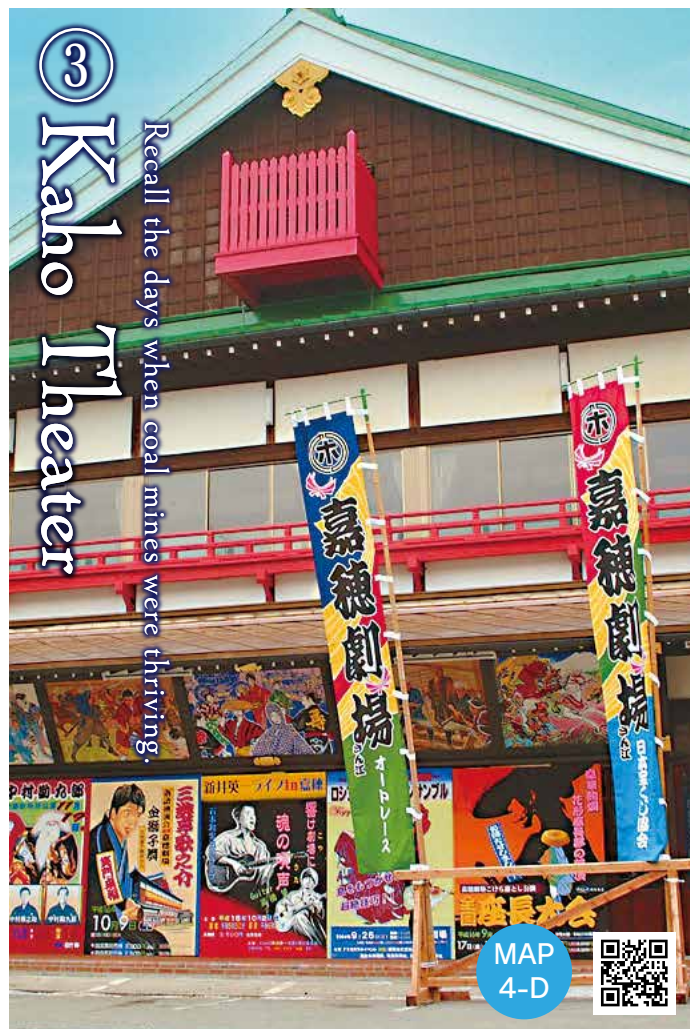


Coffins found at the Tateiwa Ruins in Iizuka



Ancient Chinese mirror found at the Tateiwa Ruins





## Highlights



Box seats



Trap cellar



Exhibition room

This theater was opened in 1931 and prospered thanks to the coal industry as a theater entertaining laborers. This theater retains its Edo period architecture with box seats, passageway (hanamachi) and a manually-revolving stage. It is one of the few theaters in Japan and is registered as a cultural property and industrial heritage. Kaho Theater was damaged due to flooding in July 2003. It was restored during the course of a year with the aid of many people. Management of the theater has been transferred from an NPO to Iizuka city. It is now closed.

☎ 0948-25-2930

🏠 5-23 Iizuka

### Iizuka's birthplace

#### 4 Noso Hachiman Shrine

According to legend, on the way back from Korea, the Empress Jingu dropped by Iizuka and said, "Itsunohika au beshi" (We should meet someday) when she parted with soldiers. That phrase is said to be one of the origins of the name "Iizuka." It's not clear when the Noso Hachiman Shrine was built, but the shrine pavilions were already present in 1359.



☎ 0948-22-0511

🏠 2-3 Miya-machi, Iizuka

🅐 Available

MAP  
4-D



### The forerunner of Hakozaki Shrine

#### 5 Daibu Hachiman Shrine

It is said Daibu Hachimangu Shrine was built in 726. Daibu Hachimangu Shrine is the original shrine of Hakozaki Hachimangu in Fukuoka City. In the shrine's yard, there is a camphor tree which was brought back from Korea by Empress Jingu and a well whose water was used during the birth of Emperor Onin.



☎ 0948-72-0621

🏠 1272 Daibu, Iizuka

🅐 Available Free to visit

MAP  
7-B



### Symbol of Iizuka

#### 6 Slag heaps in Tadakuma (Botayama)

The slag heaps in Tadakuma are the biggest of all the pyramid heaps in Japan. It is called "Chikuho Fuji," and is a symbol of Iizuka. Bota is the name for poor quality coal left after the mining process. Height: 121m / Area: 22.4ha



🏠 Tadakuma, Iizuka  
Not allowed to climb



MAP  
5-D

### Conveying industrial heritage to the present

#### 7 Winch Pedestal

The winch pedestal was built in the Taisho period and is the biggest one in the Chikuho area. The winch was operated by the power of steam. The winch transported carts carrying coal and laborers from the ground's surface to the depths of the mine. Height: 12m / Width: 13.5m



🏠 460-8 Hiratsune, Iizuka  
🅐 No parking lot Free to visit



MAP  
5-D

### Ancient Castle in the mountain

#### 8 Kakenouma Kougoishi

Kakenouma Kougo Stone is thought to be the remains of an ancient mountain castle built around the 7th century. About 1,800 pieces of stones are lined up and floodgates are set up in a small valley. It was designated as a national historic site in 1945.

🏠 1088 Kakenouma, Iizuka  
🅐 Available Free to visit



MAP  
2-E, F

## The History of Iizuka

### Iizuka prospered since the Jomon period

People have lived in Iizuka since the Jomon period, roughly 10,000 years ago. In the Yayoi period, about 2,000 years ago, northern Kyushu was an area with advanced rice cultivation, and the fertile land around the Onga River was used to cultivate rice. Artifacts such as a Zenkan mirror found at the Tateiwa Ruins as well as a stone knife crafted in Tateiwa and discovered in Saga Prefecture suggest that expansive trade took place at that time.

The burial mounds of influential figures such as Kawashima and Obasa-Nishi have also been uncovered.



Zenkankyo

### Onga River nurtures Iizuka's history and culture.

Agriculture developed early in the Onga River area, partly due to the influence of countries on the Asian continent. Many ruins and burial mounds, including the Tateiwa Ruins from the Yayoi period and the Kawashima and Obasa-Nishi burial mounds from the Kofun period, are located in the area.

Rice, coal and many other types of goods were also transported by boat on the Onga River from the 7th century through the Meiji period. The Onga River has thus nurtured the history and culture of Iizuka since ancient times.



### Post town, Iizuka in the Edo period

About 400 years ago, during the Edo period, the shogunate established a network of transportation and communication with Edo (present-day Tokyo) at its center. Development entailed building five major highways to the capital, developing side roads, and establishing post towns along the way. The Nagasaki Kaido was one of the side roads, and was especially significant in order to deliver information and culture from foreign countries to Edo during the period of national isolation. There are records of Dutch merchant Kenpel, German doctor Siebolt, Edo period scholar Yoshida Shouin and Edo-period geographer Inou Tadataka journeying to Edo via the highway. At that time, there were two post towns in Iizuka: Iizuka-shuku and Uchino-shuku. Iizuka-shuku was an important transportation hub and was the largest town in the Onga River area. Today, what was once part of the Nagasaki Kaido is now a shopping arcade in the center of Iizuka, while in Uchino-shuku, the atmosphere of the time remains.



Painting of Iizuka from the Kansei era

### The age of the coal mines that supported Japan

In the Meiji era, the area around Iizuka was known as Chikuho Tanden (Chikuho Coalfield). The region played a large role in powering the nation's modern industry, growing to be Japan's largest coalfield and producing more than 50% of its coal. Iizuka developed as its central city. In a short period of time, a large number of people, cultures, and technologies flooded into the city, transforming the once grain-producing region into one of the most vibrant areas in the country. Coal was transported by boat called goheita-bune on the Onga River, and later by train due to the development of railways. Mined coal was washed in the Onga River, turning it dark.

The coal industry has influenced every aspect of the economy, lifestyle, and culture of Chikuho. It has shaped everything from the arts, such as festivals and lion dances handed from generation to generation, to the open-hearted character of its people.



Slag heap from the early Showa era  
(Photo credit : Mujinakai)



# Nagasaki Kaido

## SUGAR ROAD | Length of the highway: 228 km



### 9 Iizuka-shuku

Iizuka-shuku was an important transportation hub and was the largest town in the Onga River area. Although the path of the Nagasaki Kaido currently lives on as a shopping arcade, not much remains of the former post town due to two large fires. Stone monuments have been erected at sites of historical importance.



MAP 4-D

### 10 Myoshoji Temple

Since there was a lodging designated for use by the daimyo (honjin) next to Myoshoji Temple, an area called "seidamari" was located at the temple's front. Here, processions were formed in advance of the daimyo's departures.



MAP 4-D

20-9 Honmachi, Iizuka  
No parking lot

### 11 Moyai Stones

Iizuka had the largest number of river boats in the Onga River area, and moyai stones were used in mooring these boats. Originally, these particular stones were placed by the riverside near a wholesale store and horse stable.



MAP 4-D

Iizuka  
No parking lot  
Free to visit

### 12 Marionette Clock

Nakachaya (Nagasakiya), which was once located in the center of Iizuka-shuku, is now the Honmachi Nakachaya Community Hall. On the face of the hall is a marionette clock, recalling scenes of Edo period Iizuka-shuku. It entertains passersby every hour between 10AM to 6PM.



MAP 4-D

8-28 Honmachi, Iizuka  
No parking lot  
Free to visit

### 13 Iinoyama

About 800 years ago during the Kamakura period, it is said that the Buddhist priest Shoko, who was a native of the Onga area, wanted to have Myojoi Temple restored and asked Taiyoin Temple to cook rice for the laborers. According to legend, they cooked too much rice and threw it away; hence, this area was named Iizuka, which means "hill of rice."



MAP 4-D

Iizuka  
No parking lot  
Free to visit

### 14 Taiyoin Temple

Originally called Koujakuji Temple, Taiyoin Temple is the oldest temple in Iizuka. It was renamed in the year 1600 by Kuroda Nagamasa, who also moved the temple in the year 1640 to its present location.



MAP 4-D

19-15 Honmachi, Iizuka  
No parking lot  
Free to visit

### 15 Uchino-shuku

Edo atmosphere still remains

Uchino-shuku was built by Tajima Mori and Tarozaemon Uchino by order of Nagamasa Kuroda in 1612. Uchino-shuku is one of the six shukus in the Chikuzen area, and bustled with people during the daimyo's trips to Edo.



3313 Uchino, Iizuka  
Parking lot for visitors (Along Route 200)



MAP 9-C

### 16 Nagasakiya

Nagasakiya used to be one of the inns in Uchino-shuku. It is said that Siebold stayed there. The present building opened as a rest house in 2004.



0948-22-5500  
3273 Uchino, Iizuka  
Now closed



MAP 9-C

### 17 Uchino Oicho (Huge Ginkgo)

A symbol of Uchino-shuku

A 400-year-old male ginkgo tree stands near the Uchino-shuku Honjin ruins. There also used to be a female ginkgo tree there. People called these two ginkgo trees a couple. They are pictured in a map of Honjin from the Edo period.



3211 Uchino, Iizuka  
Shoya Ruins Parking Lot



MAP 9-B

### 18 Sokenji Temple

After Nagamasa Kuroda passed away, Tarozaemon Uchino had his head shaved and mourned him. Tadayuki, a son of Nagamasa, was moved and gave him a gift in the name of Bokuyusoken. When he died at the age of 62, Sokenji Temple was built in dedication to his spirit.



0948-72-0287  
3084 Ushino, Iizuka  
Parking Lot beside Shoya Ruins



MAP 9-B

### 19 Uchino-shuku Exhibition Hall

This building, which was built in 1998, forms a part of the Uchino district without destroying the atmosphere of the post town. It was awarded the grand prize in the general housing category in Fukuoka Prefecture.



0948-22-5500  
3313 Uchino, Iizuka  
\*Currently closed

MAP 9-C

### 20 Hiyamizu Pass

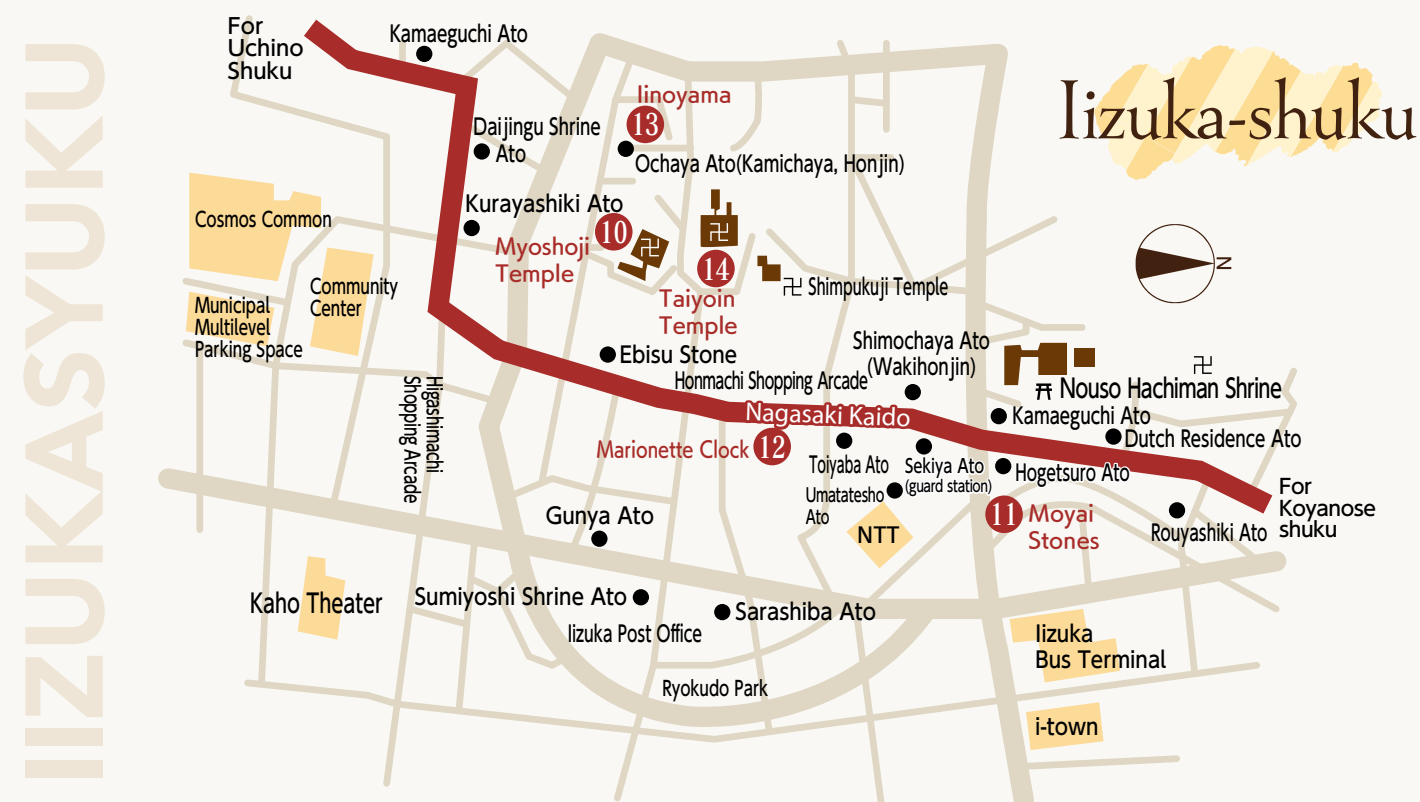
The hardest part of the Nagasaki Kaido  
This mountain pass was between Uchino-shuku and Yamae-shuku. It is known as the "Hakone of Kyushu" because of the difficulties along the way. It is said that daimyos making their trips to Edo, as well as other famous people such as Siebold, Shouin Yoshida, and Tadataka Inoue made use of the pass. There remains a cobblestone path which makes you feel history.



Uchino, Iizuka



MAP 9-B





## 21 Sun Village Akane

### Year-round outdoor adventure!

This facility lies halfway up Mt.Sangun. It has accommodations, learning center, astronomical observation facility, camping area and sports complex. Among all, the artificial grass ski slope is the largest in Japan, at 280m in length and 40m in width, where you can enjoy skiing all year. It also has a restaurant and a BBQ place.



☎ 0948-72-3331  
🏠 845-38 Yamaguchi, Iizuka  
🕒 9:00 – 17:00  
📅 Mondays  
(Change according to the season)  
🅐 Available



MAP 8-A

## 22 Pikunika Kyowakoku(Zoo)

### Petting zoo in Yakiyama highland woods.

You can interact with 300 animals (50 species) and experience pony rides, watching duck racing (weekends and holidays only), camping, and playing in the water. We have hammocks to take a nap and BBQ. (A reservation is required 1 week in advance).You can enjoy a whole day here.



☎ 0948-26-4822  
🏠 2288 Yakiyama Nagakura, Iizuka  
💰 Adult 800 yen  
Under middle school students 500 yen  
Under 2 years old free  
🕒 10:00 – 17:00  
🕒 10:00 – 18:00 (July and August)  
Wed. Thur. (During Golden Week, spring holidays and Summer holidays are no holidays.)  
🅐 Available



MAP 4-B

## 23 Iizuka Motorbike Race Circuit

### The only circuit in Kyushu.

One of the five motorbike racing venues in Japan. This circuit started in 1957. Races displaying the speed of brakeless motorbikes are powerful and impressive. During race periods, some events are held and you can enjoy food stalls as well.



☎ 0948-22-6326  
🏠 147 Namazuta, Iizuka  
🅐 Free  
🕒 Schedule is available on the website  
🅐 Available



MAP 3-E

## 25 Taishojin Park

Located on Mt. Taishojin (altitude 112m), you can enjoy panoramic views of Iizuka City and the slag heaps (called Chikuho Fuji) from the top of the park. There are about 2500 cherry trees in the park. In spring, the park is known as a spot to view cherry blossoms.



☎ 0948-22-0380  
🏠 1-14 Rakuichi, Iizuka  
🅐 Free  
🅐 Available



MAP 6-D

## 26 Katsumori Park

### Resting place for people in Iizuka.

The park is the oldest park in Iizuka City and located at the center of the city. You can enjoy fresh green leaves and water birds in the pond. It is also known as a spot to view beautiful cherry blossoms and azaleas.



☎ 0948-22-5500  
🏠 1-607-1 Katashima, Iizuka  
🅐 Free  
🅐 Available Apr. – Oct. 9:00 – 19:00  
Nov. – Mar. 9:00 – 18:00



MAP 3-D

### Golf course

## 28 Akane Golf Club

☎ 0948-72-4000  
🏠 1931 Daibu, Iizuka



MAP 6-B

## 29 Aso Iizuka Golf Club

☎ 0948-65-1155  
🏠 120 Yoshikuma Keisen-town Kaho-gun



MAP 6-D

## 30 Kaho Golf Club

☎ 0948-82-1101  
🏠 534-1 Tsutsuno, Iizuka



MAP 5-F

## 31 Kitakyushu Country Club

☎ 0948-92-2341  
🏠 412-6 Kakenouma, Iizuka



MAP 2-F

## 32 Satsuki Golf Club Ryuo Course

☎ 0948-25-2000  
🏠 1310 Yakiyama, Iizuka



MAP 5-A

## 33 JR Uchino Country Club

☎ 0948-72-3223  
🏠 740 Yayama, Iizuka



MAP 9-C

## 34 Fukuoka Lakeside Country Club

☎ 0948-65-3636  
🏠 611-19 Mukumoto, Iizuka



MAP 6-C



## 24 Iizuka Ice Palace (Indoor Skating Rink)

You can enjoy skating all year round at this indoor skating rink. You can rely on all the great instructors there.



☎ 0948-24-0881  
🏠 56-1 Kayanomori, Iizuka  
💰 (a day) Adult 1,300 yen  
High school and middle school students 1,100 yen  
Under elementary school students 900 yen  
Shoe rental: 500 yen



MAP 3-E

## 27 Chikuho Ryokuchi Park

### Relax and enjoy the lush greenery.

Located on the hill in the center of the Chikuho area, this large sport park is used for various purposes. There are tennis courts, a lawn park and playground. Paid facilities are the baseball ground, ball game ground, tennis courts, heated swimming pool and training facility. The tennis courts are used as the main venue for the Iizuka International Wheelchair Tennis Tournament.



MAP 3-F

🏠 8-25 Niho, Iizuka  
🅐 Available

### [Park]

☎ 0948-82-1023  
🅐 Free (Partial charge for sports facilities)  
🕒 8:30-17:15

### [Swimming pool]

☎ 0948-82-5556  
Paid  
🕒 9:00-21:00 (Week day and Sat.)  
🕒 9:00-17:00 (Sun. and national holiday)

📅 Dec.29–Jan.3  
Park has no holidays.  
Mondays (If it falls on a national holiday, the next day is closed.), Dec.31 and Jan.1

## 51 Kaho Terras

### At Kaho Terras, you can enjoy charming foods from the Kaho area.

Based on the theme of "Local production for local consumption", Kaho Terras offers delicious local farm products and specialties from the JA Fukuoka Kaho area. At the food courts and restaurants, you can enjoy exquisite meals. It's a wonderland of food and agriculture. There is a place for kids to play, and a spacious restroom. The parking lot is large, so it is a perfect place to take a rest during your trip. Why don't you stop by at Kaho Terras, with easy access to not only Kaho and Iizuka, but also the rest of Fukuoka Prefecture?



🏠 1151-1 Tsurumio, Iizuka  
☎ 0948-52-6338  
🕒 9:00-18:30 Produce stand (Kahobe no Daidokoro) only  
\*Business hours differ from shop to shop.  
📅 The second Wednesday of every month (The fourth Wednesday in August)  
🅐 Available



MAP 4-E

## A Nogami President Hotel

5-minute walk from JR Shiniizuka Station. Recommended for both sightseeing and business. We guarantee top-ranking hospitality. There are various plans to meet your requests.



☎ 0948-22-3480  
🏠 12-37 Shin-Tateiwa, Iizuka



## B Business Hotel Century

2-minute walk from JR Shiniizuka Station. Recommended for business and sightseeing. There is a post office on the ground floor. This hotel has 40 guest rooms of 4 types: single, double, twin and Japanese tatami.



☎ 0948-29-2515  
🏠 9-11 Shin-Iizuka, Iizuka



## C Hotel New GAEA Iizuka

This hotel is located at Yoshihara machi, which is the largest business hub in the Chikuho area. We welcome you with cozy, spacious rooms and the top hospitality.

☎ 0948-26-2500  
🏠 7-24 Yoshihara-machi, Iizuka



## D Business Hotel Yamatoya

2-minute walk from JR Shiniizuka Station. You can enjoy the homey atmosphere at this business hotel. Internet connection is available in each room. Contact for long-term stays.

☎ 0948-22-2544 0120-072-544 (free)  
🏠 5-13 Shin-Iizuka, Iizuka



## F Ryokan Akebonokan

2-minute walk from JR Shin-Iizuka station. We welcome you with a homey atmosphere. Long-term stays are welcomed.

☎ 0948-22-1708  
🏠 6-14 Shin-Iizuka, Iizuka



## G Kounoyu Onsen(hot spring)

This lodging facility with hot spring is located besides Kounoike Pond, a little far away from the center of Iizuka City. Water has been filtered by radon bedrock for thousands of years. Rest and relax at our hot spring.



☎ 0948-28-4126  
🏠 82-33 Ikawa, Iizuka



## Iizuka Sports Resort

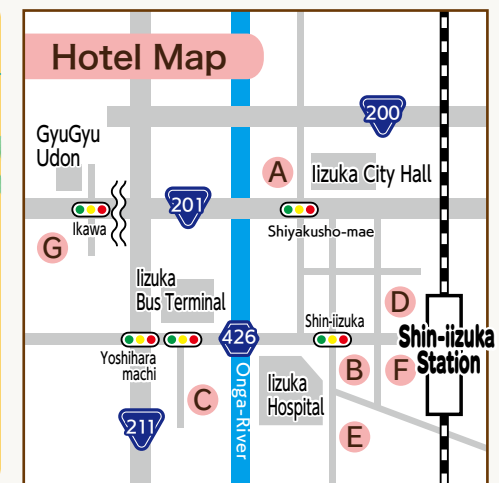
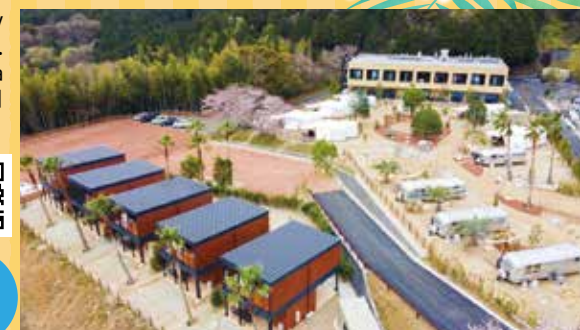
## 35 「The Retreat」

You can refresh your mind and body at our sports and wellness facilities. We have various kinds of lodging, a restaurant and BBQ. You can feel nature and enjoy delicious food.

☎ 0948-82-3177  
FAX Fax: 0948-82-3178  
🏠 8-37 Niho, Iizuka  
🌐 <http://the-retreat.jp/>



MAP 3-F





# Food in Iizuka

Working in the coal mines was risky and hard for both men and women, so they said, "Let's at least eat delicious food so we won't have any regrets." They spent much of their money on food, even if they were poor. This is how Iizuka's food culture developed. Now, Iizuka is famous as a town of delicious food.

You can get information about confectionery shops from QR codes or the leaflet Fukuyoka.▶



## Iizuka Sweets Road Tour Sweets

Nagasaki Kaido is also known as "Sugar Road." Iizuka was a post town along the road. Sugar and European sweets were brought to Iizuka in the Edo period and became popular. Iizuka started to prosper as a coal mine town in the early Meiji period. Sweets helped coal miners to relieve their fatigue after their tiring work.



### 36 Chidoriya Honke

Chidoriya Honke started its business in 1630. Chidori manju is a representative sweet in Chidoriya. It's a baked manju with white bean jam. There is a café and a showroom behind the shop. A reservation is required to visit the showroom.

☎ 0948-22-0831  
🏠 4-21 Honmachi, Iizuka  
🕒 8:30 - 19:30  
📅 Jan.1 only  
🅐 Available

### 38 Hanaichimonme

You can purchase many kinds of fresh sweets made in the factory next to the shop. There is an eating area in the shop.

☎ 0948-24-1232  
🏠 155-8 Horiike, Iizuka  
🕒 10:00 - 19:00  
📅 No holidays  
🅐 Available

EAT IN



### 37 Nanban Ourai [Sakaeya]

"Nanbanorai" baked with almond poodle is one of the most popular sweets of all in Sakaeya. This main shop building, which is 80 years old, was moved from its place along the Nagasaki Kaido to its current location. Some sweets are sold only in the main shop, while others are also sold in Iizuka. There is a café on the ground floor and a gallery on the second floor.



☎ 0948-26-0111 🏠 128-1 Horiike, Iizuka  
🕒 Shop 9:30 - 20:30 Cafe 10:00~18:00 (L.O.17:00)  
🅐 Available

### 39 Hiyoko



Hiyoko, chick-shaped manju, was created in Iizuka in 1912. The cute shape and the taste attract many people throughout the country. The history of Hiyoko is exhibited at the main shop in the Honmachi shopping arcade. You can visit the Honami Hiyoko factory for tours. Reservations required. (0948-23-0745)

☎ 0948-22-0145 🏠 15-1 Honmachi, Iizuka  
🕒 9:00 - 18:00 📅 Jan. 1 only  
🅐 Available

### 40 Kameya-Nobunaga



A shop specializing in Japanese sweets. We make Japanese sweets in the traditional way with domestic ingredients. One of them is a sweet bean jelly called "Black Diamond," which is another name for coal. There is a café and a tea ceremony room in the shop.

☎ 0948-25-6771  
🏠 77-34 Tadakuma, Iizuka  
🕒 9:00 - 18:00  
📅 Third Thursdays  
🅐 Available

EAT IN



### 41 Mikakuyaki

Local specialty in Iizuka. It's a small ball pancake like takoyaki. But this pancake doesn't include tako (octopus). The simple taste has attracted many people for over four generations.

☎ 0948-23-1167  
🏠 8-7 Honmachi, Iizuka  
🕒 10:00 - 18:00  
📅 Tuesdays 🅐 Available

## Lunch in Iizuka

### 42 Jalan (Japanese restaurant)

The restaurant is located in an alley in the Honmachi shopping arcade. The lunch menu changes daily. You can have lunch with jazz music in the background.



☎ 0948-28-9351 🏠 15-7 Honmachi, Iizuka  
🕒 11:00 - 14:00 (or until sold out)  
📅 Sundays and national holidays 🅐 No parking lot

### 46 Chirorinmura to Kuruminoki (Western restaurant)



Seating capacity is 60 on the spacious ground floor and 40 on the second floor (Japanese style room). This is a wheelchair-friendly restaurant and provides various kinds of food. It's suitable for having parties.

☎ 0948-24-5810  
🏠 239 Koubukuro Shinnmachi, Iizuka  
🕒 11:30 - 23:00 (Last order 22:30)  
Lunch time 11:30 - 15:00  
📅 1st and 3rd Wednesdays 🅐 Available

## Have Fun at Home Souvenir



### 50 Bon Declic

Bon Declic means 'a good chance' in French. This Daiginjo sake was named Bon Declic in hope that this sake would bring many people to Iizuka. It has a slight apple flavor and goes well with sweets. It is very popular among women and those who don't drink much. You can buy it at Iizuka Tourism Association and online.



### 43 Sushiyasu (sushi restaurant)

Selecting fresh seafood and rice, the skillful chef prioritizes customer satisfaction. Enjoy the satisfying taste of sushi. We are waiting for you.



☎ 0948-25-0821  
🏠 4-5 Iizuka, Iizuka Himejiya building 1F  
🕒 11:30 - 14:30 (Last order 13:00)  
17:00 - 3:00  
📅 Sundays  
🅐 No parking lot

### 45 Akaneso (beef specialty restaurant)

"Chikuho beef," a premium local branded beef, is served in simple dishes, such as steak or shabu shabu. Over 50 years, the restaurant has been run by three generations. Reasonable prices and a homey atmosphere attract many people. A reservation at least one day in advance is required.

☎ 0948-72-0903  
🏠 611-2 Yamaguchi, Iizuka  
🕒 11:30 - 22:00  
🅐 Available  
📅 Irregular holidays  
\*Reservations required by the day before.



### 47 Ikesu Taiyoshi (Japanese restaurant)

There is a huge fish tank (ikesu) inside the restaurant. We purchase fresh seafood caught in Fukuoka, Karatsu, Yobuko, Shimonoseki and Nagasaki. Every dish brings out the full flavor of the ingredients.

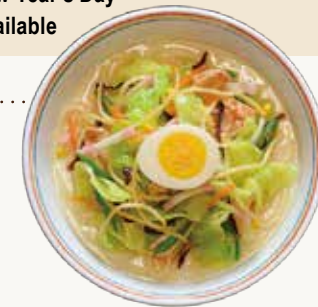
☎ 0948-22-2266 🏠 11-18 Yoshiharamachi, Iizuka  
🕒 11:30 - 14:00 (Last order 13:30) Thursday, Friday, Saturday  
17:00 - to the last 📅 Sundays  
🅐 Available (Daytime only) \*Reservations required by the day before.



### 44 Mendokoro Hyakkatei (noodle restaurant)

Famous for its generous serving of food and unique service. Special service for students, people over 70 years old and babies. Don't hesitate to ask for it.

☎ 0948-29-0317  
🏠 55-1 Kayanomori, Iizuka  
🕒 11:00 - 21:00 (Last order 20:30)  
📅 New Year's Day  
🅐 Available



## Dinner in Iizuka



### 48 Chinese Restaurant Yosen (Chinese restaurant)

You can enjoy authentic Chinese dishes at a reasonable price. The original flavor of the ingredients and light taste attract people of all ages.

☎ 0948-25-1786 🏠 62-1 Tokuzen, Iizuka 🅐 Available  
🕒 11:00 - 15:00 (14:00 order stop) / 17:00 - 21:00 (20:00 order stop)  
📅 Thursdays

### Iizuka local curry



### 49 Tamagon Factory

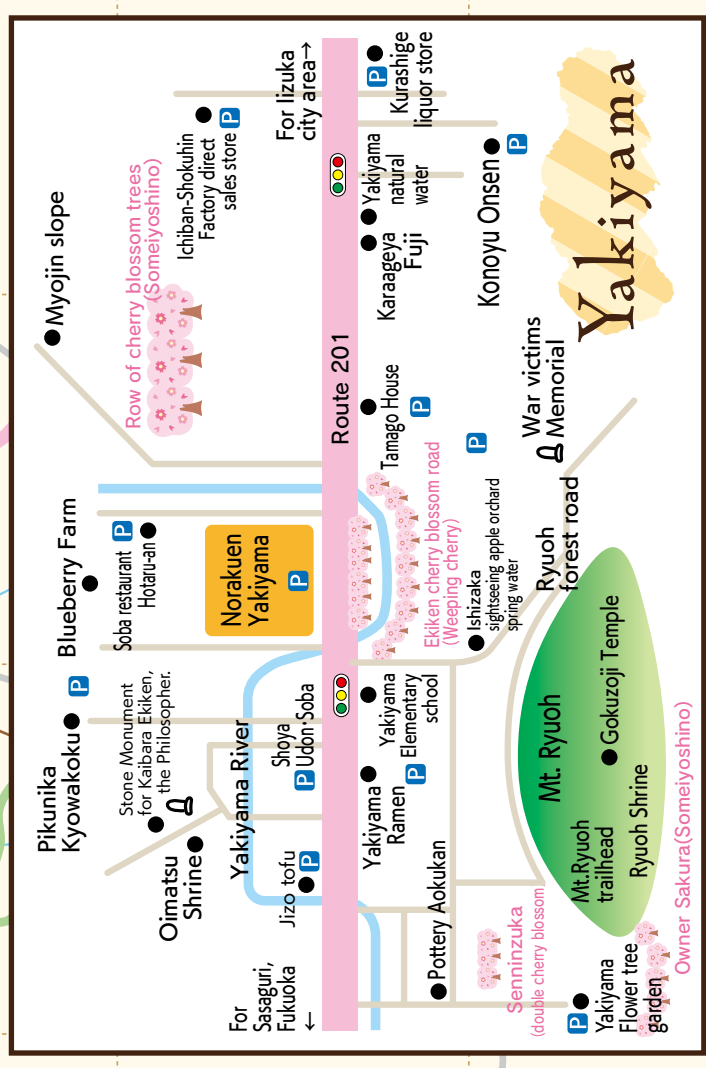
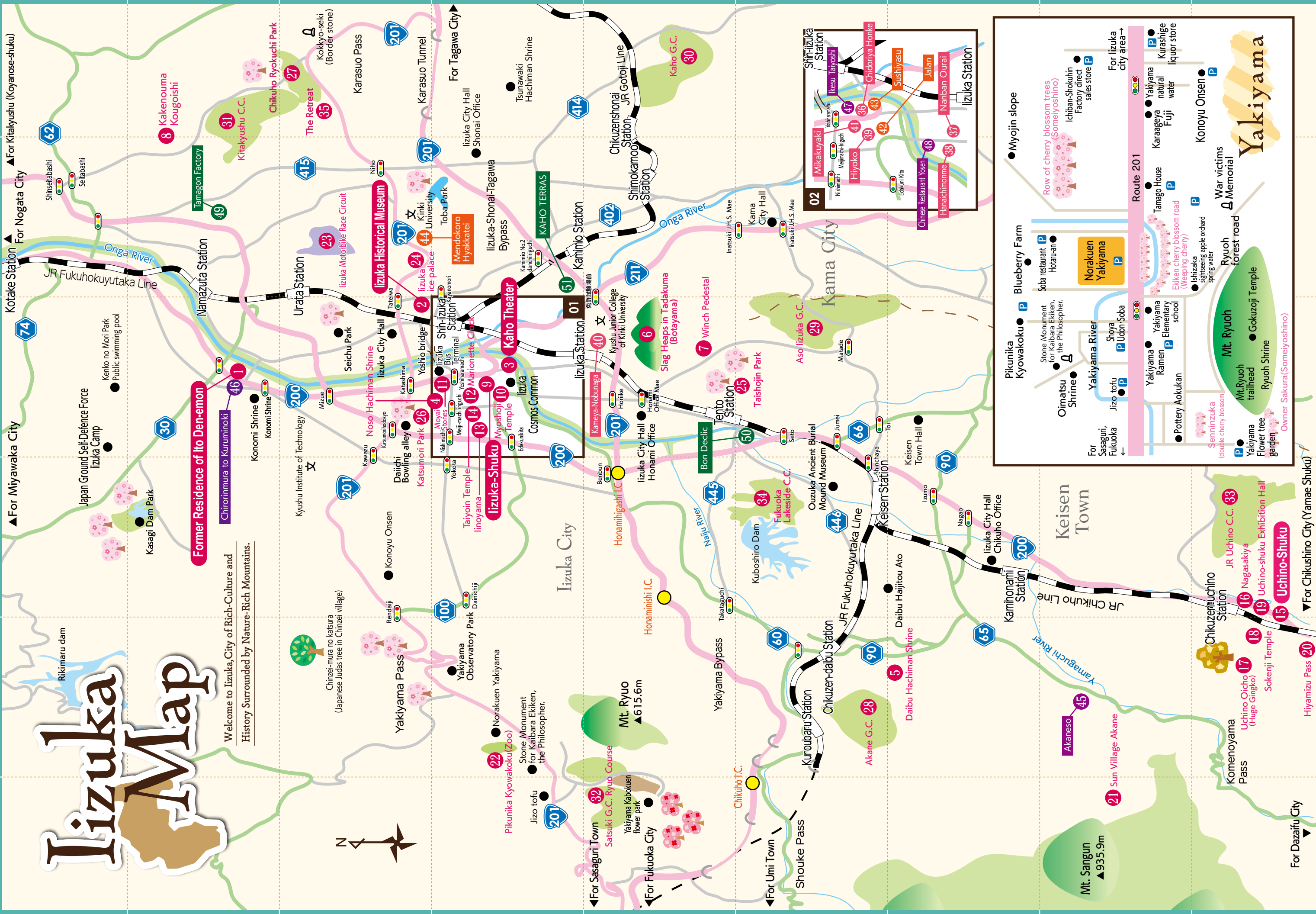
You can buy fresh eggs from the poultry, organic rice and sweets made with fresh eggs. You can enjoy "rice with raw egg" as much as you like at a café.

☎ 0948-92-6844  
🏠 1790-2 Sayo, Iizuka  
🕒 (Shop) 9:00 - 18:00 (Café) 11:00 - 17:00 (16:30 order stop)  
📅 (Shop) No holiday (Café) Wednesdays  
🅐 Available





Welcome to Izizuka, City of Rich-Culture and  
History Surrounded by Nature-Rich Mountains.





## Iizuka Hina Dolls Festival

(early February to late in March)

Various hina dolls are displayed in Ito Residence and other places in Iizuka City. This is a representative sightseeing event in Iizuka City and attracts many tourists.



## Music Contest in Iizuka

(Prejudging: May 3rd to May 5th Final: early June)

The contest has 2 sections, piano and vocal. It started in 1982 as a gateway to stardom for young musicians. It contributes to developing local music culture.



MAP  
4-D



## Iizuka Yamakasa

(July 1st to 15th)



The Yamakasa is known as a summer festival for citizens. On the last day of the festival period, more than 3000 men run through the streets carrying the Yamakasa float. People watching their running along the streets splash water over those men to cheer them up. It is an impressive scene and makes us cool.



## Lion Dance of Daibu Hachimangu Shrine

(the last Saturday and Sunday in September)

The lion dance was first dedicated to Daibu Hachimangu Shrine in 1724. Since then, it has been handed down to the present day as one of the representative lion dances in Fukuoka prefecture. It is performed on the last Saturday and Sunday of September every year.



MAP  
7-B



## Chikuzen no kuni Iizuka Kaido Festival

(the fourth Sunday in October)

The festival is held centering around Iizuka shopping area every autumn. Various events are held, such as dance competition and costume parade relating to Nagasaki Kaido in Edo period.



## The Emperor's Cup・Empress's Cup

International Wheelchair Tennis Championships in Iizuka (Japan Open) (in April)

This is the top wheelchair tennis tournament in Asia, ranked as an ITF (International Tennis Federation) Super Series event, following the four major tournaments (Grand Slams). Each year, world-class players, including those who participate in the Paralympics, compete in this tournament. Over 1000 volunteers are involved in its operation, and the regional hospitality, known as the "Iizuka Method," is highly praised by both the International Tennis Federation and the players.



Japan Open 2023



player.Yui Kamiji



player.Tokito Oda

# Events in Iizuka

## Iizuka Fireworks Festival

(early August)

The festival has a long history and attracts 80,000 people every year. Set fireworks, such as Niagara Falls and other big pieces are well known. You can enjoy lots of food stands on the venue.



## Tsunawaki Hachimangu Shrine Shinko Events

(the third Sat. and Sun. in October in odd-numbered year.)



This shrine ritual is held in October every other year. It was designated as an important intangible folk-cultural asset in Fukuoka prefecture. Sacred music and dance, lion dance, infants dance and horseback archery are dedicated to the shrine.



MAP  
4-F

## Eishokai

(December 1st to 5th)

This is a special year-end sale in Iizuka city. Since early Meiji era, the sale has been offered more than 130 times. Get the best deals.



MAP  
4-D



# Tourist spot in Neighboring areas

## Otsuka Ancient Burial Mound Museum



Keisen  
Town

Otsuka Ancient Burial Mound is a renowned burial mound in Japan and designated as national historic site (national treasure level). The inner wall of the stone chamber is filled with colorful patterns. The museum next to the Burial Mound displays a life-size replica of a stone chamber, miniatures of ancient burial mounds in Japan and their descriptions.



☎ 0948-65-2900 ☰ 376 Jumei Keisen-town, Kaho-gun

¥ Adults 330yen(270yen) / Middle school and high school students 160yen(130yen)  
Elementary school students 110yen(80yen) \*Prices indicated in the ( ) are a group over 20 people admission prices. Free admission for high school students and under on Saturdays.

🕒 9:30 - 16:30

📅 Mondays (If Monday is a national holiday, Tuesday is closed.) Dec.29 - Jan.3

🅐 Available

## Yunoura Taiken no Mori

You can experience farm work, feel nature firsthand and learn in group at this facility with accommodation. This is the hub for introducing the charm and resources in Keisen town.



Keisen  
Town



☎ 0948-65-1085

☰ 4670-1 Haji Keisen-town Kaho-gun

¥ (within town) 5,000yen per night, added 1,000yen per user  
(outside town) 5,000yen per night, 1,500yen added per user  
\*Please inquire about other facility usage fees.

🕒 8:30-17:15 (except Wednesdays, excluding year-end and New Year holidays)

📅 Wednesdays (Accommodations are available from Tuesday to Wednesday.)

🅐 Available

## Tagawa City Coalmining historical Museum



Tagawa  
City

You can learn history of coal mining, culture, art and folk customs. Outside of the museum, there are 2 smokestacks which are reflected in the song (Tankobushi), a coal pit, a steam locomotive to transport coal and big machines used for coal mining. Documents about Yamamoto Sakubei are also displayed, his paintings were registered as UNESCO Memory of the World Heritage.



☎ 0947-44-5745

☰ 2734-1 Ita, Tagawa

¥ Adult 400yen(280yen) High school students 100yen(70yen)  
Elementary and middle school students 50yen(30yen) ( ) is the price per person for groups of 20 or more. Admission free for high school students and under on Saturdays.

🕒 9:30 - 17:30 (last entry 17:00)

📅 Mondays (except for Mon on a national holiday) and Dec.29 - Jan.3

🅐 Available

## Road Station Itoda

The station provides various information, such as weather, traffic and sightseeing spot in Chikuho area. There is a market, where you can buy fresh produce, seafood and processed products.



Itoda  
Town



☎ 0947-26-2115

☰ 162-4 Itoda-town, Tagawa-gun

🕒 Market: 9:00 - 18:00  
Restaurant: 9:00 - 18:00 (except some)  
Information service: Available 24 hours

📅 Jan.1-2

🅐 Available

## Oda Hiroki Museum of Art



Kama  
City

The museum showcases the works of Oda Hiroki, who is a member of The Japanese Academy of Arts and the president of Nika Association. His works are exhibited in chronological order, including his masterpiece "Sanka", a big piece "Suiyoku" and sketches.



☎ 0948-62-5173 ☰ 767 Kamiushui, Kama

¥ Adult 330yen(270yen) / High school students, college students 220yen(180yen)  
Middle school students and elementary school students 110yen(80yen)  
\*Prices indicated in the ( ) are a group over 20 people admission prices.  
Free admission for high school students and under on Saturdays.

🕒 9:30 - 17:30 (Admission is until 17:00)

📅 Mondays (If Monday is a national holiday, Tuesday is closed.)  
Dec.28 - Jan.4 / The day for cleaning the facility )

🅐 Available

## Road station Usui



Kama  
City

The station provides fresh vegetables, fruits, local branded "Kaho Beef", rice, seafood, cakes and bread baked in a stone oven made in Spain. Traceability is implemented on the vegetables and the fruits.



☎ 0948-62-4400

☰ 328-1 Kamiusui, Kama 🕒 9:00 - 18:30

📅 The third Wednesday (If Wed. is a national holiday, Thursday is closed. / Jan.1-4)

🅐 Available

## Kyushu Apple Village



Kama  
City

Local farmers cultivate Japanese pears and apples in the village, which spreads about 10 hectares over the mountainside of Mt. Umami. Fruits are not put on the market but for tourist only. A wide variety of fruits, 7 species of Japanese pears, including "Kosui" and "Hosui" and 7 species of apples, including "Tsugaru" and "Fuji".



☎ 0948-57-2580 ☰ 1901-8 Umami, Kama-city

¥ Free Open: Early Aug. - Late Nov.

🕒 9:00 - 18:00 📅 Irregular holidays 🅐 Available

## Nogata City Coal Museum



Nogata  
City

The Coal Museum was opened in 1972 to convey the history or coal to future generations. A steam locomotive used for transporting coal and a metasequoia tree, which is said to be the log of coal, are on display. Among them, the former Chikuho Coal Mining Association Nogata Chamber and the simulated tunnel of the relief training center, which was designated as a national historic site on October 15th, 2018, is a must-see.



☎ 0949-25-2243

☰ 692-4 Oaza Nogata, Nogata-city

¥ Adult 100yen(60yen) High school students, college students 50yen(30yen)  
Free admission for under junior high school students Free admission for high school students on Saturdays  
Free admission for holders of disability certificate (Please show it at the counter)

🕒 9:00 - 17:00 (last entry 16:30)

📅 Closed: Mondays (except for Mon. on a national holiday) and Dec.29 - Jan.3

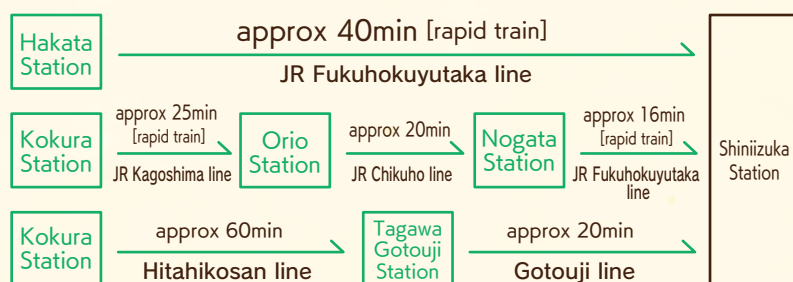


# Access



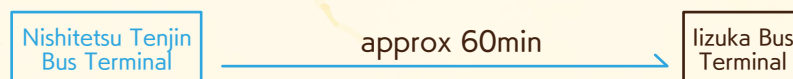
## ELECTRIC TRAIN

### Train Access



## BUS

### Bus Access



## TAXI

### Sightseeing by taxi

Anzen taxi	0948-23-1016
Ace taxi	0948-31-1990
Orange taxi	0948-22-0023
Greenbelt taxi	0948-22-1655
Shonai taxi	0948-82-0018
Honami taxi	0948-22-1040
Minori taxi	0948-22-4264
MG taxi	0949-34-7700

©Click here to get information about sightseeing in Iizuka.

<http://www.kankou-iizuka.jp>

Iizuka Tourism Association

検索

Contact  
information

## Iizuka Tourism Association

i-town 2F 6-1, Yoshihara-machi, Iizuka, Fukuoka 820-0040  
Tel 0948 22 3511 Fax 0948 22 2528 (☎:Sundays / No holidays during an event)  
E-mail:otoiawase@kankou-iizuka.jp

